



ANIMAL GROUPS: FACT SHEET

NORTH AMERICAN BLACK BEAR



Black bears have stout bodies that are bulky and thickset, with a short stubby tail. Preferring to live in dense areas of forest, they can also be found in mountain and swamp areas across Northern USA. They are naturally solitary animals but when a group of bears do come together, it is called a sleuth.

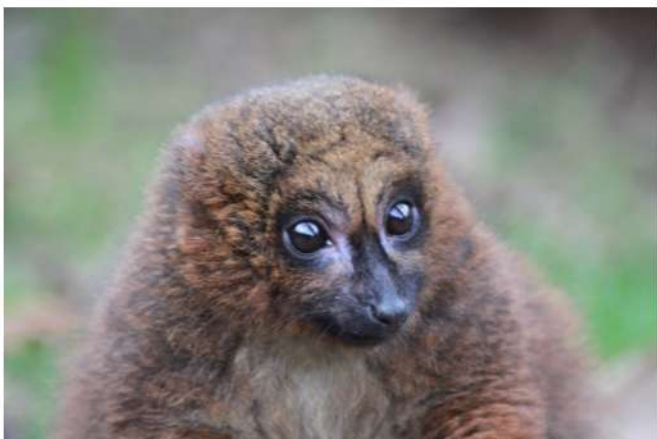
ALDABRA GIANT TORTOISE

Woburn Safari Park is home to a group of Aldabra giant tortoises, which is known as a creep. They have incredibly long necks, with thick, short and round legs. They love to graze in the sunshine and use their powerful legs to make a mess and dig holes in their paddock.



RED BELLIED LEMUR

Although they are named red-bellied, it is only the males who have this feature, the females have a white underbelly. Their distinctive call sounds like a pig grunting, but they will also make meow-like calls. A group of red bellied lemurs is called a troop.





ANIMAL GROUPS: FACT SHEET



BLUE AND GOLD MACAW

The blue and gold macaw is a large parrot native to South America. A group of macaws is called a company. These large macaws are ultramarine blue above, mostly golden-yellow below, with a long tail and green forehead.

MONGOOSE

These slender, ferret-like carnivores are quick on their feet, showing natural instinct they search for predators in the sky above. Yellow mongoose are very social, living in large groups called a band.



AMUR TIGER

Amur tigers are the largest of the big cat species. Each tiger has a unique patterned coat which provides camouflage while hunting. Like the human fingerprint, no two coats are the same. Tigers are naturally solitary animals, but a group of tigers is known as a streak.



ANIMAL GROUPS: FACT SHEET



RED PANDA

The red panda spends most of its life in the trees; they have a modified wrist bone that acts like a thumb to help them grasp bamboo. A group of red pandas is known as a pack. They are classed as carnivores due to their jaws, feet and teeth but they eat mainly vegetation.

AFRICAN LION

Lions are social animals that live in prides, these are family units that can include up to three males, a dozen or so females and their young. They can sleep for up to 20 hours a day and are most active just after dusk.



CAPE PORCUPINE

Cape porcupines are the world's largest species of porcupines, and are Africa's largest rodent. A group of porcupines is called a prickle and a baby porcupine is called a porcupette.





ANIMAL GROUPS: FACT SHEET

CALIFORNIAN SEA LION

The California sea lion is covered in a thick layer of blubber under its skin to keep it warm when in the water.

Although a very social species, which spends most time on land in large groups known as a rookery, they tend to feed individually or in small groups.



UTILA SPINY TAILED IGUANA

The Utila island spiny-tailed iguana is one of the most endangered iguanas in the world. A group of iguanas is called a slaughter. The colour of adult Utila spiny-tailed iguanas varies from light grey to dark grey-brown.



EASTERN MOUNTAIN BONGO

Eastern mountain bongo typically live in small family groups known as herds of up to eight females and their young. This large species of African forest antelope is listed as critically endangered due to poaching and illegal trapping.





WOBURN
Safari Park

ANIMAL GROUPS

Print out the photos and the animal groups on the next page, then see if you can match them together correctly. Use the fact sheets to help you!

NORTH AMERICAN BLACK BEAR



BLUE AND GOLD MACAW



ALDABRA GIANT TORTOISE



MONGOOSE



RED BELLIED LEMUR



AMUR TIGER





WOBURN

Safari Park

RED PANDA



CALIFORNIAN SEA LION



AFRICAN LION



UTILA SPINY TAILED IGUANA



CAPE PORCUPINE



EASTERN MOUNTAIN BONGO





WOBURN

Safari Park

HERD

CREEP

BAND

COMPANY

STREAK

PRICKLE

SLAUGHTER

PRIDE

ROOKERY

PACK

TROOP

SLEUTH